

Technical specifications

DIGILAP TITANIUM

- Sensor: 1 CCD 1/4"
- Size of the sensor: Useful length = 300 mm Total length = 435 mm
- Weight of the sensor = 390 g
- Length of the cable: 3,20 meters

Autoclavable camera head

- Sensor: 1 CCD 1/3"
- 22,5mm integrated objective
- Size of the sensor: L = 115 mm; Ø = 32 mm
- Weight of the sensor: 190 g
- Length of the cable: 3,60 meters

Non autoclavable camera head

- Sensor: 1 CCD 1/3"
- C Mount
- Size of the sensor: L = 60 mm; Ø = 32 mm
- Weight of the sensor: 200 g
- Length of the cable: 3,60 meters

Conformity to standards

- Conforms to the European Directive 93/42/CEE Class I & Class IIa devices
- Conforms to IEC 60601-1; IEC 60601-2-18, IEC 417 and ISO 980 standards
- Conforms to the European Directive 2002/96/EEC on Waste Electrical and Electronic Equipment (WEEE)
- Not protected against projected water (IPX0)
- Not suitable for use in the presence of a mixture of inflammable anaesthetic and air, oxygen or nitrogen protoxide

MULTIS Camera Control Unit (CCU)

- Class I, applied part Type BF
- Resolution: 752 x 582 PAL; 768 x 494 NTSC
- Definition: >500 lines
- Sensitivity: 1.5 lux
- Signal / Noise ratio: 52 dB (Gain 0 dB)
- Electronic shutter: Automatic (1/50 to 1/100 000)
- Shutter matching picture size (windows)
- Video settings displayed on screen
- Last video settings automatically saved
- Video enhancement
- Modification of the red and the blue separately
- Gamma adjustment
- Selection of the language (English, French, German, Spanish, Italian)
- Menu per application
- Color bar generator
- White Balance with automatic saving
- Size of the control unit: W: 300 mm; D: 300 mm; H: 66 mm
- Weight of the control unit: 2500 g
- 2 video composite outputs (1 Vcc / 75 Ω)
- 2 Y/C video outputs (1 Vcc & 0,3 Vcc / 75 Ω)
- 2 SDI video outputs in option
- 1 RGB and 1 DV IEEE1394 video outputs in option
- 2 peripheral outputs (to control a peripherals)
- Power supply: (110 - 230 V~; 50 - 60 Hz)
- Power consumption: 35 VA
- 2 T 800 mA - 250 V fuses (Use only fuses marked UR)
- Continuous Service

Ordering informations

S_169_6002	Digilap Titanium 10 mm 30° Autoclavable, PAL, with sterilisation basket
S_169_6003	Digilap Titanium 10 mm 30° Autoclavable, NTSC, with sterilisation basket
S_169_6000	Digilap Titanium 10 mm 0° Autoclavable, PAL, with sterilisation basket
S_169_6001	Digilap Titanium 10 mm 0° Autoclavable, NTSC, with sterilisation basket
S_169_4000	Digital 1CCD Autoclavable camera head PAL with integrated 22mm coupler
S_169_4001	Digital 1CCD Autoclavable camera head NTSC with integrated 22mm coupler
S_169_2000	Digital 1CCD camera head, C-mount, PA
S_169_2001	Digital 1CCD camera head, C-mount, NTSC

S_169_0100	MULTIS CCU with 2 SDI outputs, PAL
S_169_0101	MULTIS CCU with 2 SDI outputs, NTSC
S_169_0104	MULTIS CCU with DV & RGB outputs, PAL
S_169_0108	MULTIS CCU with DV & RGB outputs, NTSC
S_169_0102	MULTIS CCU, PAL
S_169_0103	MULTIS CCU, NTSC
700159	Sterilization basket for Digilap Titanium
700105	Sterilization basket for the autoclavable camera head
S_067_0004	22.5 mm objective for the non autoclavable camera head
S_230_0002	300 Watts Xenon light source
S_700056	Monitor (1280 x 1024 pixels)

French production plant:
SOPRO-COMEG
ZAC Athélia IV
Avenue des Genévriers
13705 La Ciotat cedex - France
Tél. +33 (0) 442 98 01 01
Fax +33 (0) 442 71 76 90
info@sopro-comeg.com

www.sopro-comeg.com

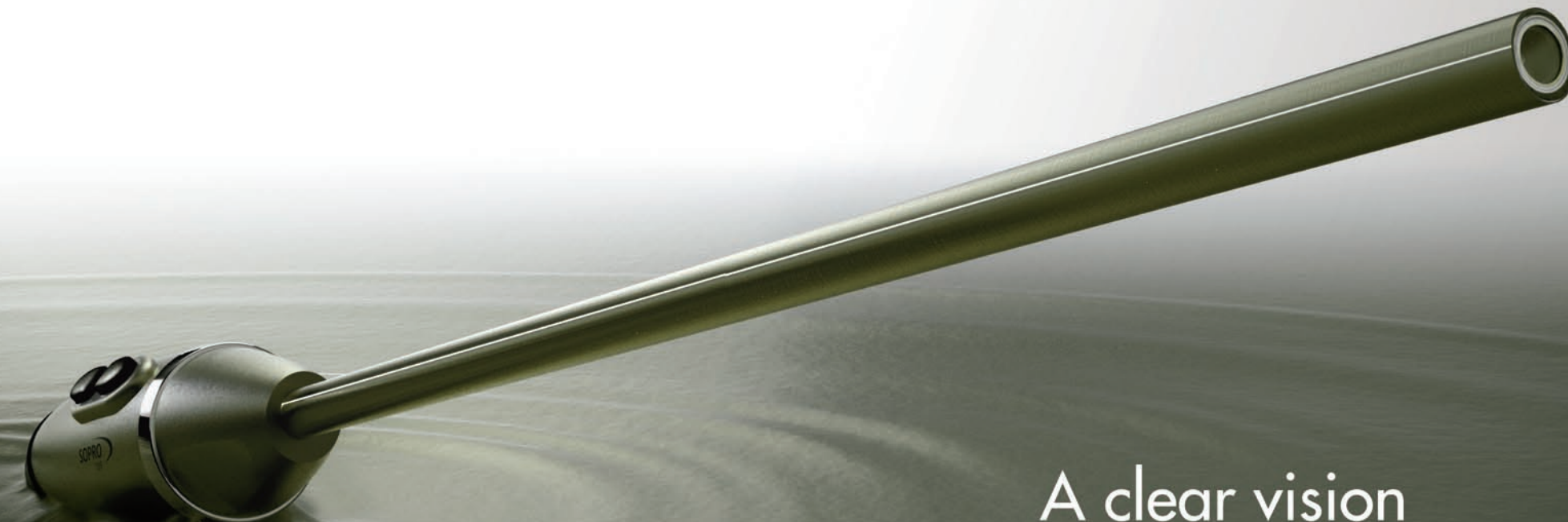


German production plant:
SOPRO-COMEG
Dornierstr.55
D-78532 Tuttlingen
Germany
Tel: +49 (0) 7461-9344-0
Fax: +49 (0) 7461-9344-20
info@sopro-comeg.com

www.sopro-comeg.com

DIGILAP Titanium

PUBLICIS ACTIV-18884 - Non contractual document - Réf. 011224 - Copyright 2009 SOPRO-COMEG. All rights reserved. No information or part of this document may be reproduced or transmitted in any form without the prior permission of SOPRO-COMEG.



A clear vision



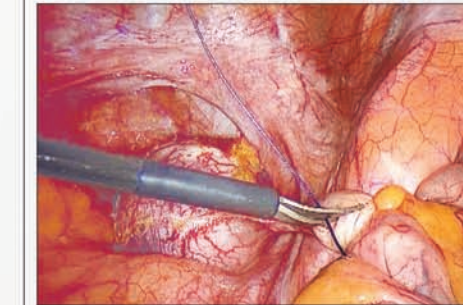
DIGILAP Titanium

Beyond the limits of vision

- ➔ Autofocus: sharp images in all circumstances
- ➔ All in one product: the perfect image at each surgery
- ➔ High reliability: Titanium handle and no fragile rod lenses inside
- ➔ Fog free: work in confidence with better visibility
- ➔ Autoclavable 134°C/273°F solution
- ➔ Light cable separated: cost effective and versatility



Autofocus



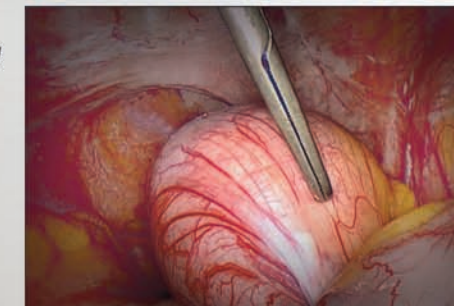
Large depth of field: no more focusing

0° and 30° direction of view

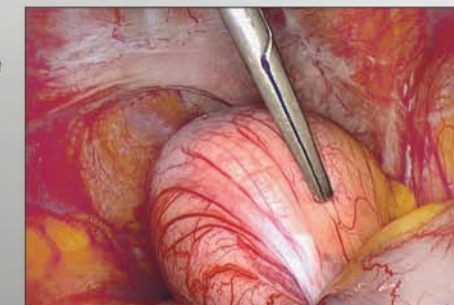


Improved illumination homogeneity

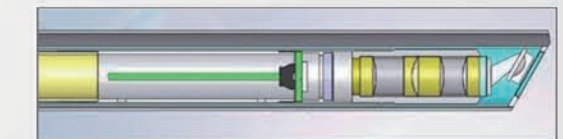
Standard lighting



Digilap Titanium



Chip on the tip technology



- sharp image
- long life product

The space age metal

Titanium is a light transition metal with excellent mechanical properties (low density, strong). The two most useful properties of the metal form, are corrosion resistance and the highest strength-to-weight ratio of any metal in its unalloyed condition. Titanium is as strong as some steels, but 45% lighter. Titanium can be alloyed with other elements to produce strong lightweight alloys for multiple applications, ranging from medical to military and aerospace applications.

MULTIS
1 single CCU for several solutions

